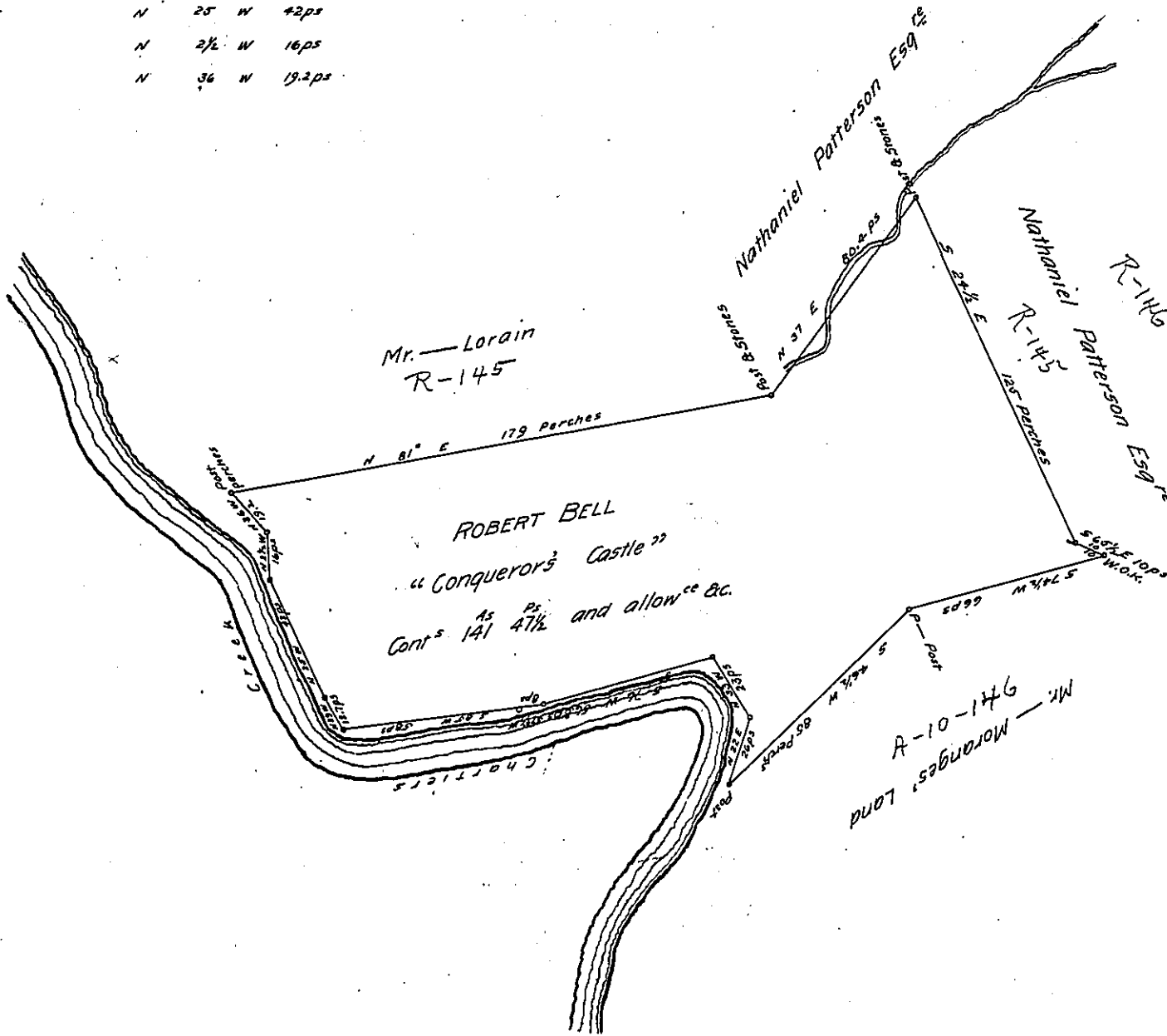


Courses along Chartiers Creek

N	22	E	26 ps
N	33	W	23 ps
S	76	W	56.8 ps
S	74½	W	8 ps
S	85	W	58 ps
N	29	W	12.7
N	25	W	42 ps
N	2½	W	16 ps
N	36	W	19.2 ps

A Draught



A Draught of a Certain tract of Land Called "Conquerors Castle" Situate in St Clair township Surveyed on a Warrant granted to M^r Robert Bell March 25th 1831 Cont^s 141^{as} 47½^{ps} and all^{ce} of 6 p Ct &c

pr Jⁿ M^cNevin D. S.

To Jacob Spangler Esq^r
Surveyor General

IN TESTIMONY that the above is a copy of the original remaining on file in the Department of Internal Affairs of Pennsylvania, made conformably to an Act of Assembly approved the 16th day of February, 1833, I have hereunto set my Hand and caused the Seal of said Department to be affixed at Harrisburg, this

twenty sixth day of October 1904.

James R. Brown
Secretary of Internal Affairs.